

Test generator for monitors



▼ 8 pattern charts ▼

- Colour bars
- Purity (Red, Green, Blue)
- Gray-scale bars
- Crosshatch
- Multiburst
- White 100%

▼ Outputs ▼

- 2 x D9
- D15
- RGB
- Composite sync.
- Horizontal sync.
- Vertical sync.
- Video without sync.

SPECIFICATIONS	GV - 241		
RGB outputs Output	R	B	G
	Red signals	Blue signals	Green signals with/without sync.
	0.7 Vpp		
Amplitude	75 Ω, BNC connector		
Impedance			
CVS Output Output	Video signal		
Amplitude	0.7 Vpp		
Impedance	75 Ω, BNC connector		
Synchronism Output Output	HS	VS	CS
	Horizontal Sync.	Vertical Sync.	Sync. Composite
	TTL, BNC connector		
Señal			
C1-C2-C3 Outputs	Connectors D9, D15 miniature and D15 respectively. Direct connection to the monitor. The outputs of the D9 connector are all TTL. When the "Color bars" or "Gray-scale bars" are selected, a B/W picture will appear. When used with a Hercules monitor, the R, G and B charts will be black.		
CVS Output Output	Video signal		
Impedance	75 Ω, BNC connector		
Power supply Mains supply	AC 110-125-220-230-240 V ± 10%, 50-60 Hz		
Consumption	9 W		
Mechanical features Dimensions	W. 212 x H. 102 x D. 241 mm		
Weight	2.4 kg.		

The wide range of different models in the computer monitor field drives demand for versatile instruments like the **GV-241**, a universal generator for checking monitors that greatly simplifies their adjustment, verification and repair.

The **GV-241** provides up to 29 possible graphic systems; signals are highly reliable in regard to sync, line and field timing. It supports three monitor connector types, as well as RGB, CVS outputs; horizontal, vertical and composite sync are through BNC connectors.

Supports a wide range of monitors

First group (P)

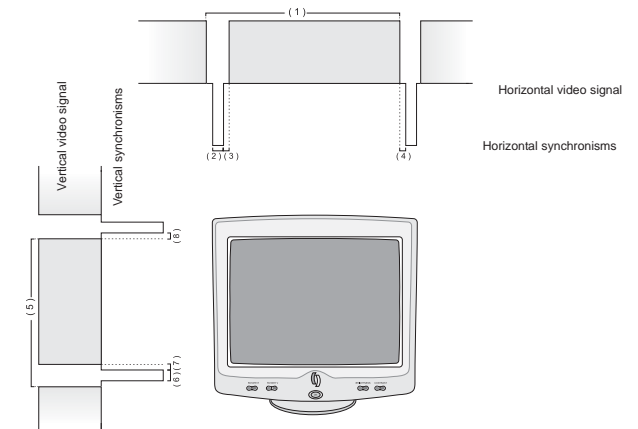
System	Pixels	Frequency		PAH (4) (ms)	SH (2) (ms)	PPH (3) (ms)	PAV (8) (ms)	SV (6) (ms)	PPV (7) (ms)	Polarity		Interlace
		Horiz (kHz)	Vert (Hz)							H	V	
		(1) ⁻¹	(5) ⁻¹									
VGA	640x480	31.469	59.94	0.636	3.813	1.907	0.318	0.064	1.048	-	-	NO
VESA	800x600	37.879	60.317	1	3.2	2.2	0.026	0.106	0.607	+	+	NO
VESA	1024x768	48.363	60.004	0.369	2.092	2.462	0.062	0.124	0.6	-	-	NO
ATT	1280X1024	63.953	59.938	0.727	1.018	2.255	0.016	0.078	0.579	-	-	NO
Sun	1600X1280	89.2	66.9	0.001	2.03	1.4	0.011	0.112	0.471	+	+	

TOLERANCE		
Horizontal frequency shift		± 1 %
Vertical frequency shift		± 1,5 %

Second group (S)

System	Pixels	Frequency		PAH (4) (ms)	SH (2) (ms)	PPH (3) (ms)	PAV (8) (ms)	SV (6) (ms)	PPV (7) (ms)	Polarity		Interlace
		Horiz (kHz)	Vert (Hz)							H	V	
		(1) ⁻¹	(5) ⁻¹									
CGA, EGA	640x200	15.81	61.5	6.6	4.2	7.2	1.58	0.19	2.15	+	+	NO
MDA, Hercules	720X350	18.42	49.91	0.6	8.25	1.45	0.001	0.9	0.2	+	-	NO
EGA Hi	640X350	21.86	59.72	0.001	4.9	1.6	0.001	0.6	0.08	+	+	NO
VGA	640X350	31.469	70.09	0.636	3.813	1.907	1.176	0.064	1.902	+	-	NO
VGA	640X400	31.469	70.09	0.636	3.813	1.907	0.318	0.064	1.112	-	+	NO
VGA Text	720X400	31.48	70.11	0.635	3.812	1.906	0.304	0.063	1.111	-	+	NO
VESA	720X400	37.736	90.044	0.75	1.25	4.5	0.239	0.08	0.981	-	+	
MAC II	840X480	35	66.67	2.116	2.116	3.175	0.084	0.086	1.114	+	+	NO
VESA	800X600	35.156	56.25	0.667	2	3.556	0.028	0.057	0.626	+/-	+/-	
VESA	640X480	37.86	72.809	0.762	1.27	4.603	0.238	0.079	0.74	-	-	
8514	1024X768	35.522	86.96	0.178	3.92	1.247	0.014	0.112	0.563	+	-	YES
SVGA 72Kc	800X600	48.09	72.01	1.121	2.399	1.279	0.479	0.124	0.774	+	+	
1025x768	1025X768	48.3	60	0.369	2.092	2.462	0.062	0.124	0.6	-	-	NO
SONY Std1	1024X768	48.78	60	1	1.5	2	0.061	0.061	0.799	+	+	NO
DEC	1024X864	54	60	0.16	1.85	1.68	0.001	0.056	0.629	+	+	
XGA	1024X768	56.5	70	0.32	1.813	1.92	0.053	0.106	0.513	-	-	NO
57K/72H	1024X768	57.09	72	0.32	1.77	1.87	0.054	0.103	0.5	+	+	
Radius	1152X882	66	72	0.138	1.28	2.42	0.001	0.2	0.38	+	+	
MAC II TP	1152X870	68.681	75.06	0.32	1.28	1.44	0.043	0.043	0.567	-	-	NO
Samsung	1006X1048	62.8	59.8	0.15	1.88	1.58	0.001	0.127	0.542	+	+	
SONY Std 2	1280X1024	63.337	59.98	0.407	1.701	1.849	0.047	0.047	0.41	+	+	NO
DEC	1280X1024	70.7	66.5	0.267	1.33	1.87	0.042	0.042	0.467	+	+	
Arts. Graf	1280X1024	78	73	0.228	0.915	1.907	0.038	0.038	0.488	+	+	

- PAH (4) Horizontal front porch time
- SH (2) Horizontal synchronism
- PPH (3) Horizontal back porch time
- PAV(8) Vertical front porch time
- SV (6) Vertical synchronism
- PPV (7) Vertical back porch time



For other monitor types contact with us